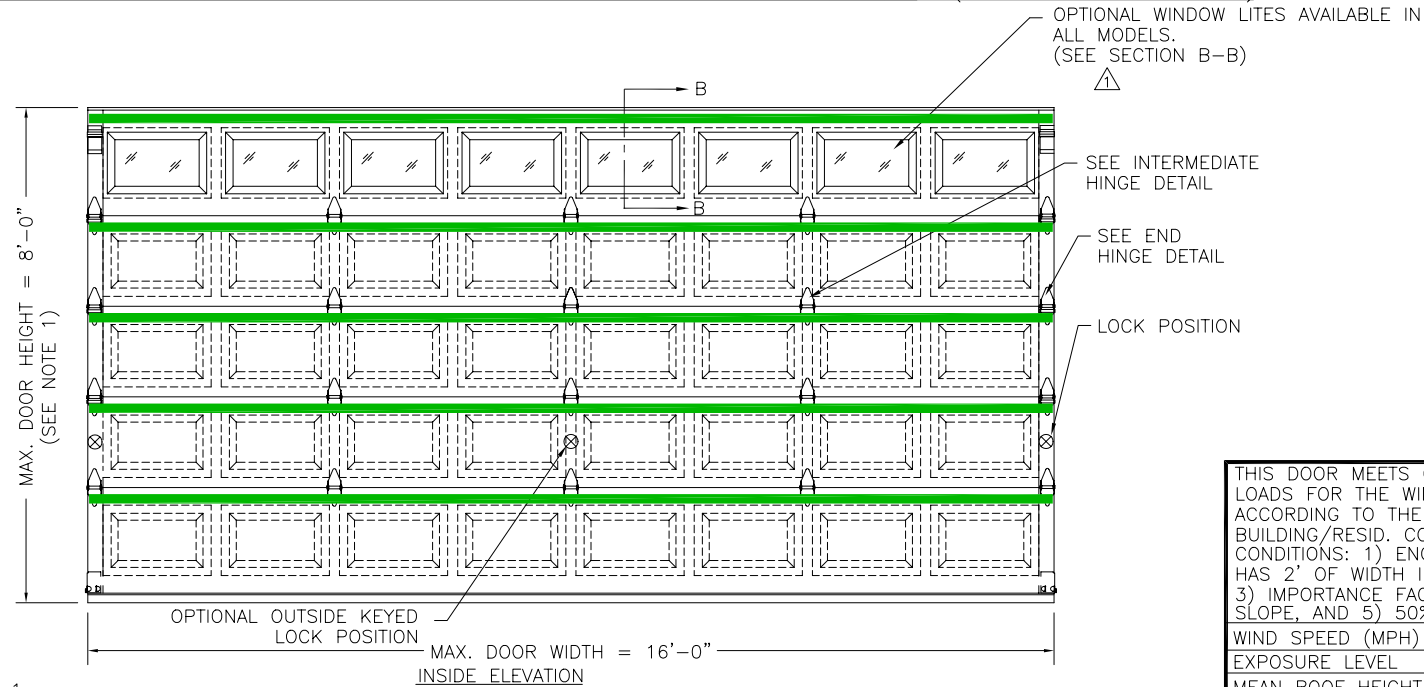


CLOPAY MODELS 4400, 4401 (24 GA. EXTERIOR SKIN)  
 CLOPAY MODELS HDG, HDGL, 4300, 4301, 4310 HOLMES MODELS 66, 67, 68 (27 GA. EXTERIOR SKIN)

| REVISIONS |       |          |           |        |                      |
|-----------|-------|----------|-----------|--------|----------------------|
| REV. NO.  | ZONE: | DATE:    | ECN NO.   | APPVD: | DESCRIPTION          |
| 01        | -     | 10/28/03 | ER1022R02 | SH     | ADDED M/N 66, 67, 68 |



OPTIONAL WINDOW LITES AVAILABLE IN ALL MODELS. (SEE SECTION B-B)

SEE INTERMEDIATE HINGE DETAIL

SEE END HINGE DETAIL

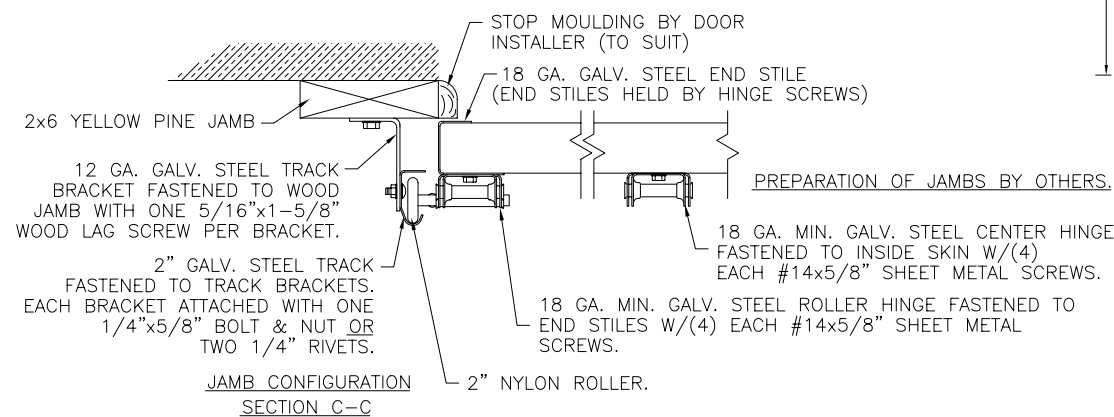
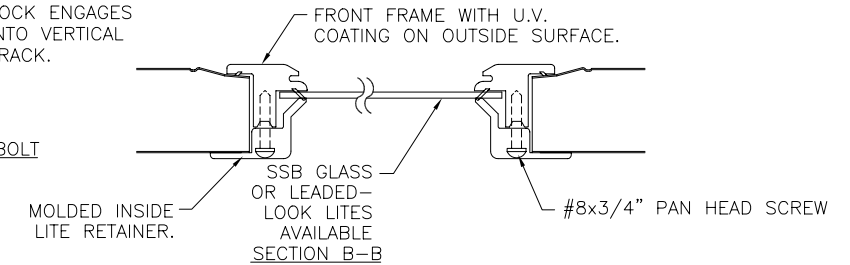
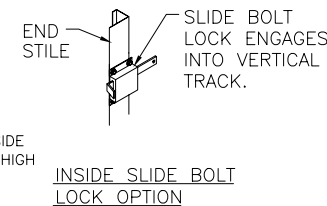
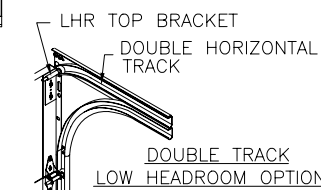
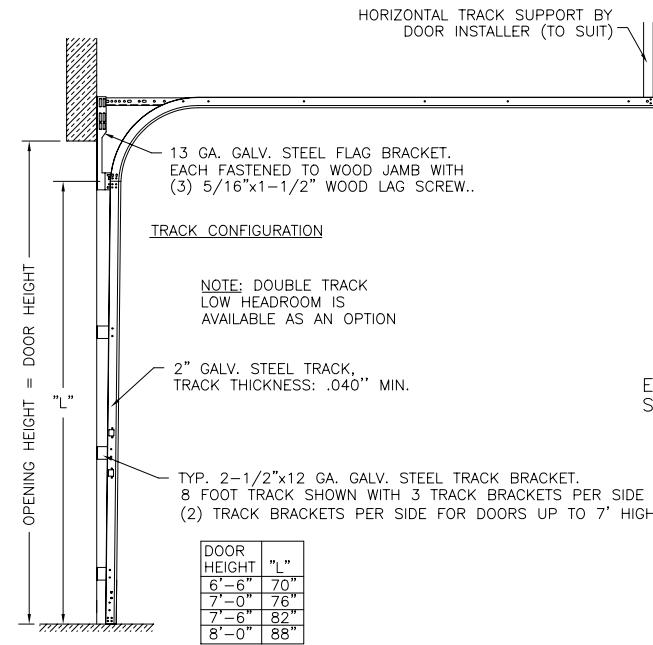
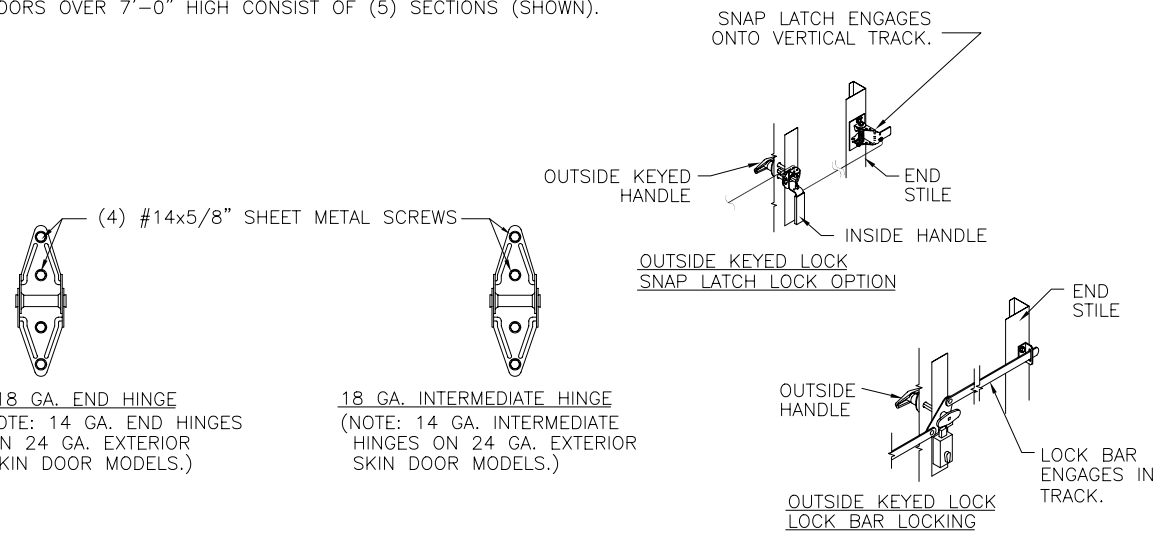
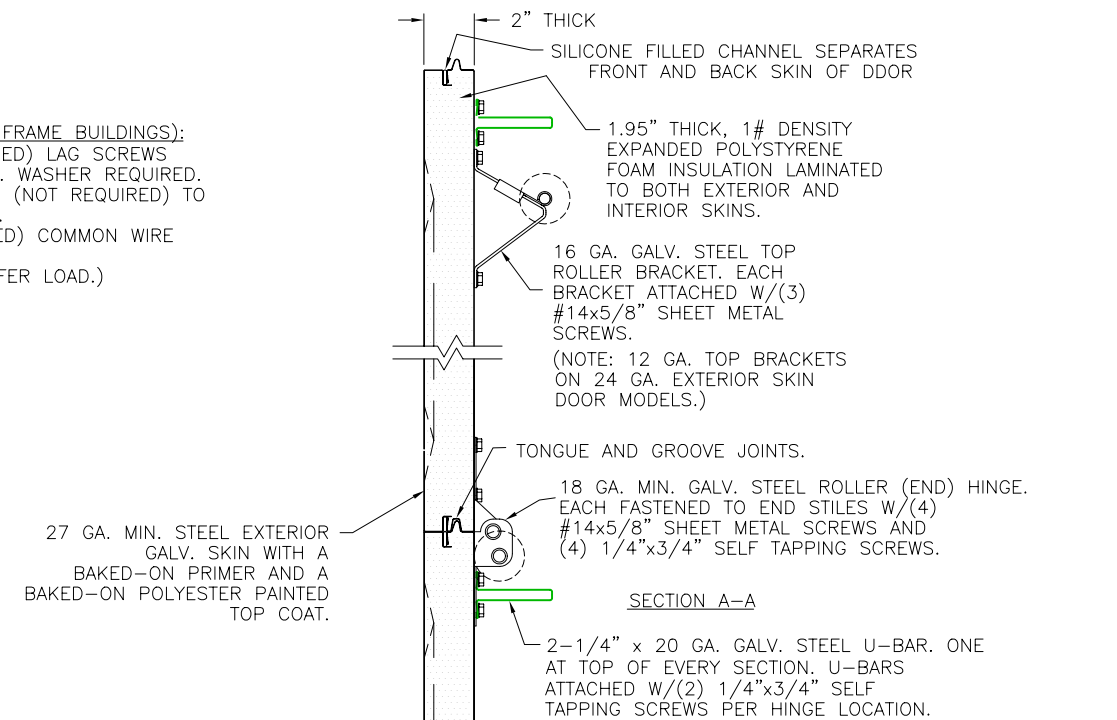
LOCK POSITION

VERTICAL JAMB ATTACHMENT (WOOD FRAME BUILDINGS):  
 OPTION 1: 3/8" x 3" (1-1/2" EMBED) LAG SCREWS ON 24" CENTERS. 1-1/8" O.D. MIN. WASHER REQUIRED. LAG SCREWS MAY BE COUNTERSUNK (NOT REQUIRED) TO PROVIDE FLUSH MOUNTING SURFACE.  
 OPTION 2: 16D x 3-1/2" (2" EMBED) COMMON WIRE NAILS ON 8" CENTERS.  
 (HORIZONTAL JAMBS DO NOT TRANSFER LOAD.)

THIS DOOR MEETS OR EXCEEDS THE DESIGN LOADS FOR THE WIND SPEEDS LISTED BELOW ACCORDING TO THE 2000 INTERNATIONAL BUILDING/RESID. CODE FOR THE FOLLOWING CONDITIONS: 1) ENCLOSED BUILDING, 2) DOOR HAS 2' OF WIDTH IN BUILDING'S END ZONE, 3) IMPORTANCE FACTOR OF 1.0, 4) ANY ROOF SLOPE, AND 5) 50% SAFETY FACTOR.

|                  |      |
|------------------|------|
| WIND SPEED (MPH) | ≤ 90 |
| EXPOSURE LEVEL   | B    |
| MEAN ROOF HEIGHT | 30'  |

NOTE 1:  
 DOORS UP TO 7'-0" HIGH CONSIST OF (4) SECTIONS (NOT SHOWN)  
 DOORS OVER 7'-0" HIGH CONSIST OF (5) SECTIONS (SHOWN).



| DOOR HEIGHT | "L" |
|-------------|-----|
| 6'-6"       | 70" |
| 7'-0"       | 76" |
| 7'-6"       | 82" |
| 8'-0"       | 88" |

NOTE 2: THE DESIGN OF THE SUPPORTING STRUCTURAL ELEMENTS SHALL BE THE RESPONSIBILITY OF THE PROFESSIONAL OF RECORD FOR THE BUILDING OR STRUCTURE AND IN ACCORDANCE WITH CURRENT BUILDING CODES FOR THE LOADS LISTED ON THIS DRAWING.

DESIGN ENGINEER: MARK WESTERFIELD, P.E.  
 FLORIDA P.E. #48495, NC P.E. #23832, TEXAS P.E. #91513

DESIGN LOADS: +12.5 PSF & -14.0 PSF  
 TEST LOADS: +19.0 PSF & -21.0 PSF

NOTICE:  
 Confidential/Proprietary information of CLOPAY BUILDING PRODUCTS CO. is contained herein and may not be disclosed, used, duplicated, made available, or distributed without its prior consent. Failure to observe this notice may result in liability for any damages and losses resulting therefrom.

Unless Stated Otherwise  
 TOLERANCES are  
 .0 = ± .03  
 .00 = ± .015  
 .000 = ± .005  
 .0000 = ± .001  
 Degrees = ± 1/2"

Third Angle Projection

Unless Stated Otherwise  
 DIMENSIONS ARE IN INCHES.

**Glopay** Building Products Company  
 8585 Duke Boulevard  
 Mason, OH 45040  
 Tel. No. 1-513-381-4800  
 Fax No. 1-513-762-3519

DESCRIPTION: 4400/4300/4310/HDG DC +12.5/-14.0 PSF DES.

DRAWN BY: DAS DATE: 11/22/02 SCALE: NTS DWG. SIZE B

CHECKED BY: DATE: SHEET 1 OF 1 REV. NO. 01

DWG. NO.: 102695