

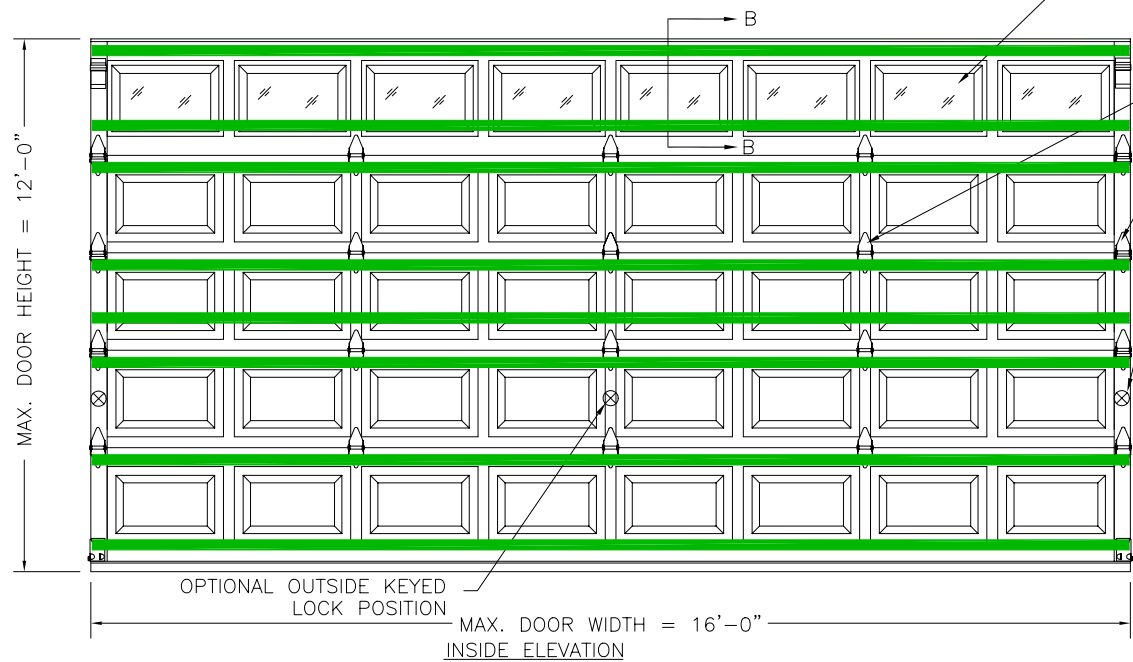
CLOPAY MODELS H000, H001, H100

REVISIONS

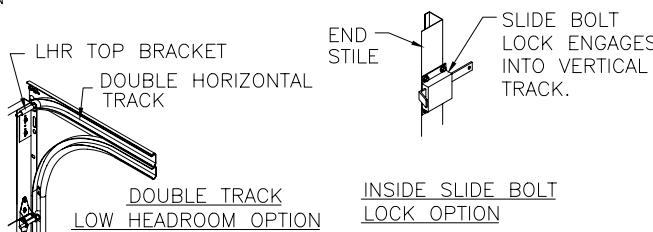
REV. NO.	ZONE:	DATE:	ECN NO.	APPVD:	DESCRIPTION
00	-	4/25/03	ER1022	SH	ORIGINAL ISSUE

THIS DOOR MEETS OR EXCEEDS THE DESIGN LOADS FOR THE WIND SPEEDS LISTED BELOW ACCORDING TO THE 2000 INTERNATIONAL BUILDING/RESID. CODE FOR THE FOLLOWING CONDITIONS: 1) ENCLOSED BUILDING, 2) DOOR HAS 2' OF WIDTH IN BUILDING'S END ZONE, 3) IMPORTANCE FACTOR OF 1.0, 4) ANY ROOF SLOPE, AND 5) 50% SAFETY FACTOR.

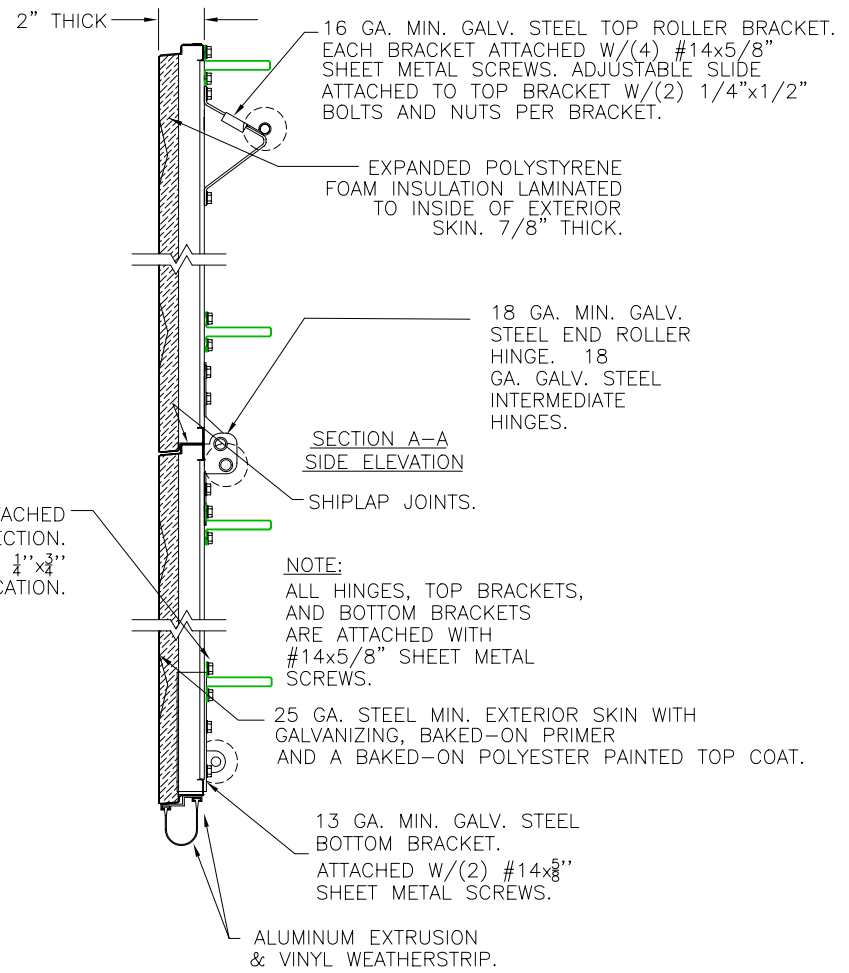
WIND SPEED (MPH)	≤ 90
EXPOSURE LEVEL	B
MEAN ROOF HEIGHT	30'



DOOR HEIGHT	# OF SECTIONS
8'-3" TO 8'-9"	5
9'-0" TO 10'-6"	6
10'-9" TO 12'-0"	7

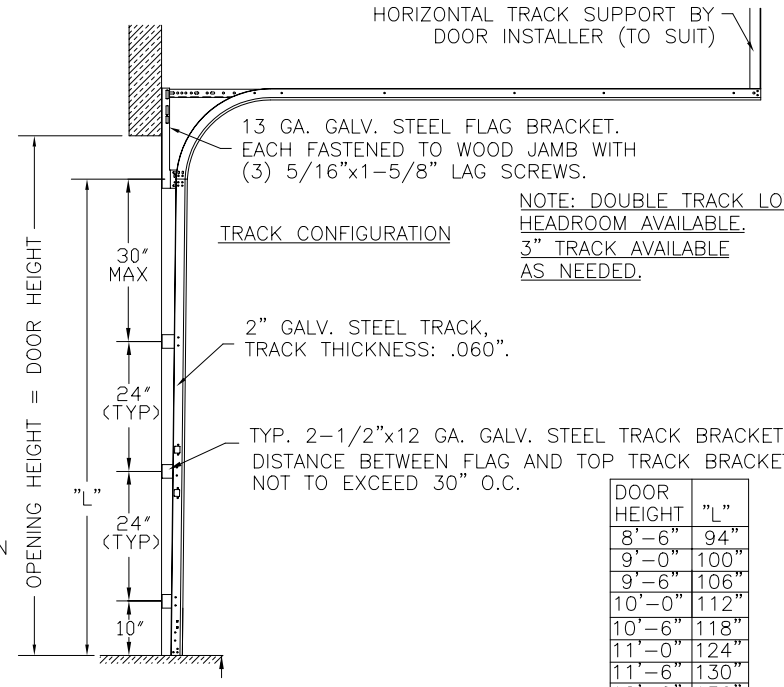
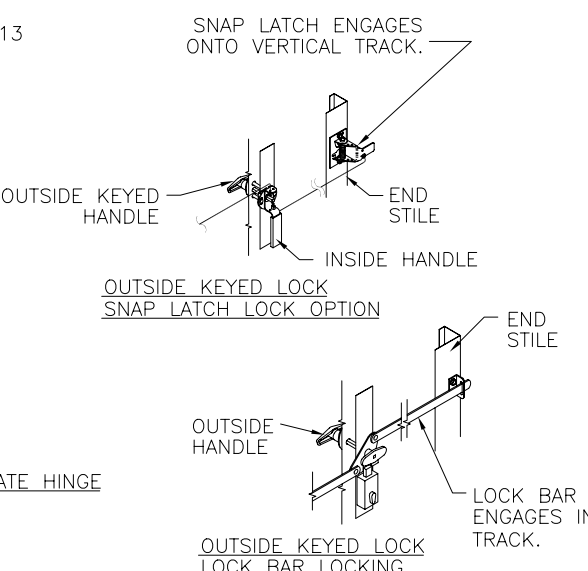


3" x 20 GA. STEEL U-BARS ATTACHED IN A 2-1-2-1 PATTERN PER SECTION. EACH U-BAR ATTACHED W/(2) 1/4"x3/4" SELF-TAPPING SCREWS PER STILE LOCATION.

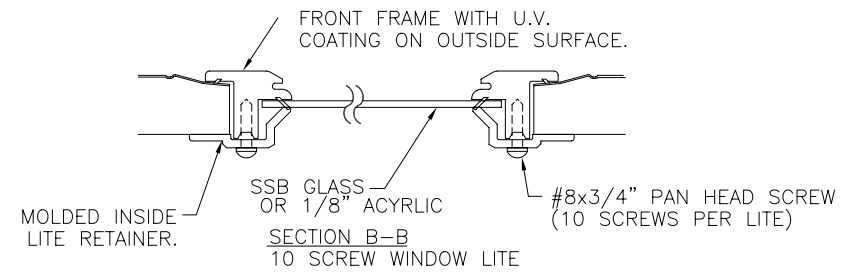
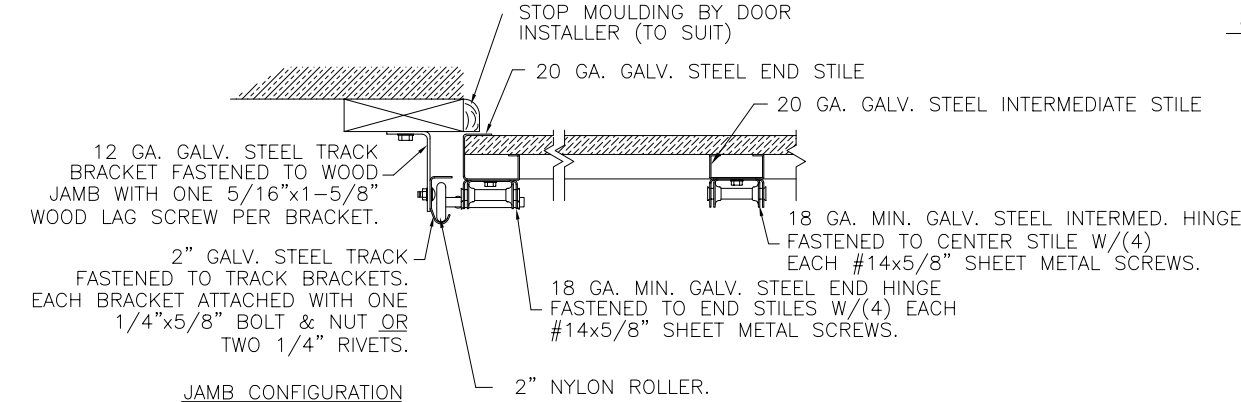
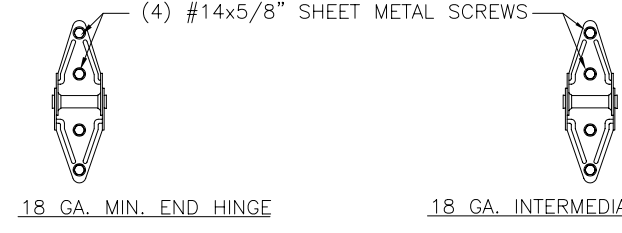


DESIGN ENGINEER: MARK WESTERFIELD, P.E.  
FLORIDA P.E. #48495, NC P.E. #23832, TEXAS P.E. #91513

VERTICAL JAMB ATTACHMENT (WOOD FRAME BUILDINGS):  
OPTION 1: 3/8" x 3" (1-1/2" EMBED) LAG SCREWS ON 24" CENTERS. 1-1/8" O.D. MIN. WASHER REQUIRED. LAG SCREWS MAY BE COUNTERSUNK (NOT REQUIRED) TO PROVIDE FLUSH MOUNTING SURFACE.  
OPTION 2: 16D x 3-1/2" (2" EMBED) COMMON WIRE NAILS ON 8" CENTERS.  
(HORIZONTAL JAMBS DO NOT TRANSFER LOAD.)



DOOR HEIGHT	"L"
8'-6"	94"
9'-0"	100"
9'-6"	106"
10'-0"	112"
10'-6"	118"
11'-0"	124"
11'-6"	130"
12'-0"	136"



NOTE: THE DESIGN OF THE SUPPORTING STRUCTURAL ELEMENTS SHALL BE THE RESPONSIBILITY OF THE PROFESSIONAL OF RECORD FOR THE BUILDING OR STRUCTURE AND IN ACCORDANCE WITH CURRENT BUILDING CODES FOR THE LOADS LISTED ON THIS DRAWING.

DESIGN LOADS: +12.5 PSF & -14.0 PSF  
TEST LOADS: +19.0 PSF & -21.0 PSF

NOTICE: Confidential/Proprietary information of CLOPAY BUILDING PRODUCTS CO. is contained herein and may not be disclosed, used, duplicated, made available, or distributed without its prior consent. Failure to observe this notice may result in liability for any damages and losses resulting therefrom.

Third Angle Projection

Unless Stated Otherwise TOLERANCES are  
.0 = ±.03  
.00 = ±.015  
.000 = ±.005  
.0000 = ±.001  
Degrees = ±1/2'

Unless Stated Otherwise DIMENSIONS ARE IN INCHES.

**Glopay** Building Products Company  
8585 Duke Boulevard  
Mason, OH 45040  
Tel. No. 1-513-381-4800  
Fax No. 1-513-762-3519

DESCRIPTION: H000/H001/H100 DC +12.5/-14.0 PSF DES.

DRAWN BY: DAS DATE: 11/27/02 SCALE: NTS DWG. B  
CHECKED BY: DATE: SHEET 1 OF 1 SIZE B  
DWG. NO.: 102711 REV. NO. 00