

4

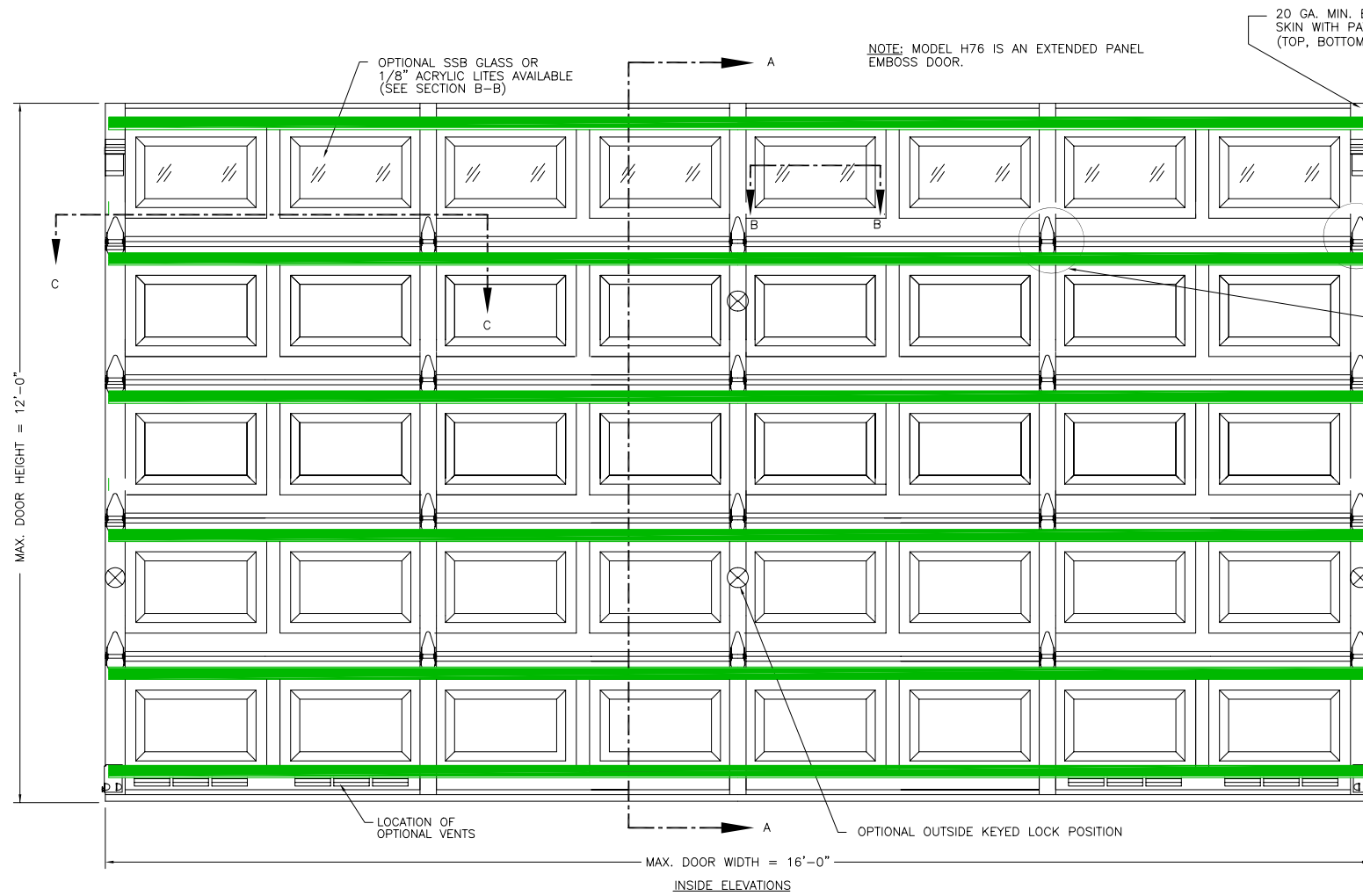
3

2

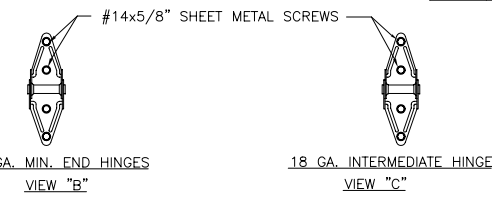
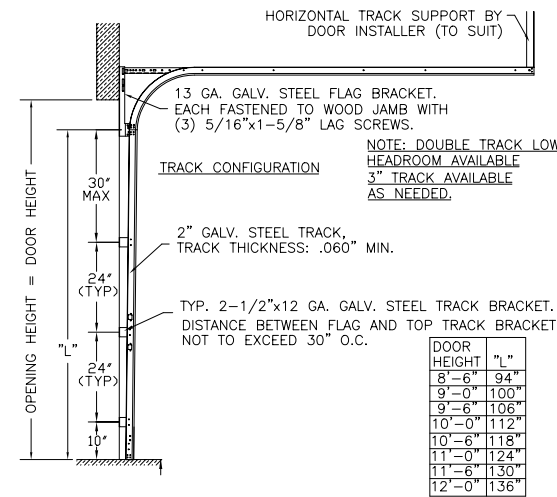
1

CLOPAY MODELS: H73, H76 (25 GA. STEEL SKIN)
 CLOPAY MODEL: H94 (24 GA. STEEL SKIN)
 CLOPAY MODEL H500 (25 GA. STEEL SKIN WITH 1-5/16" THICK POLYSTYRENE FOAM INSULATION)

REVISIONS					
REV. NO.	ZONE	DATE	ECN NO.	APPVD:	DESCRIPTION
00	-	4/25/03	ER1022	SH	ORIGINAL ISSUE



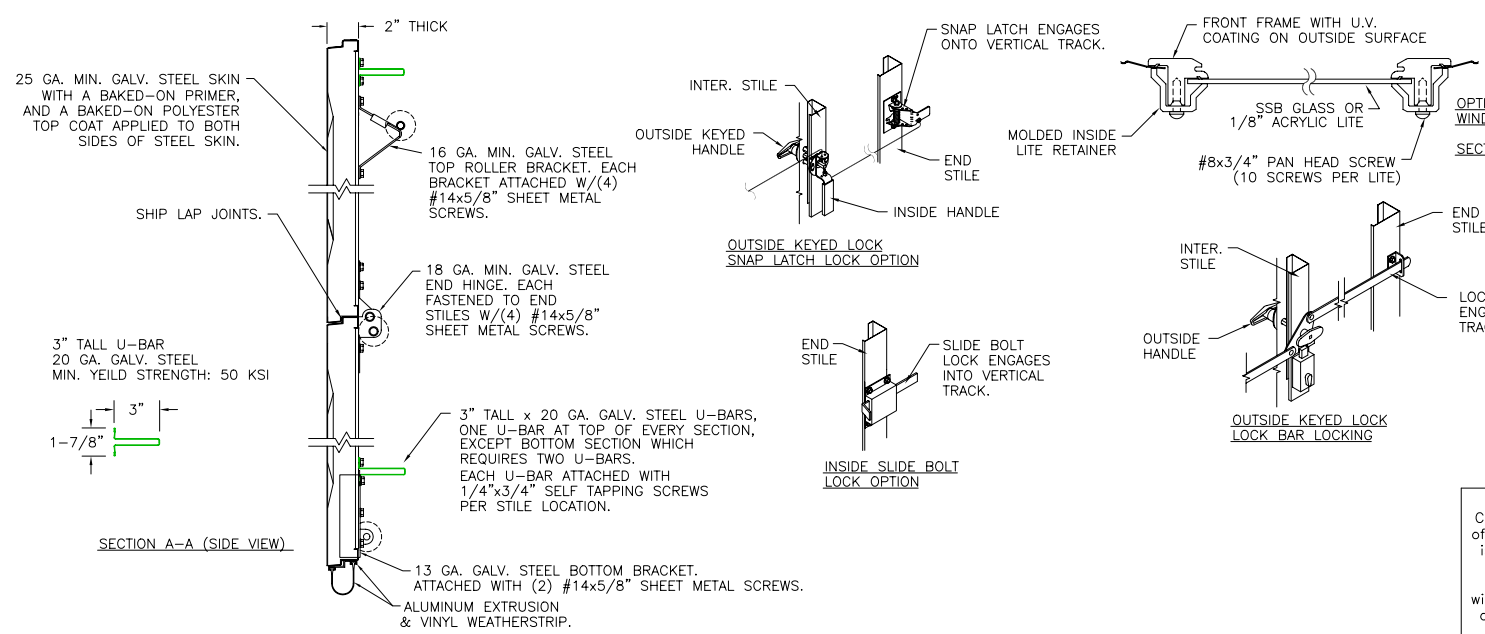
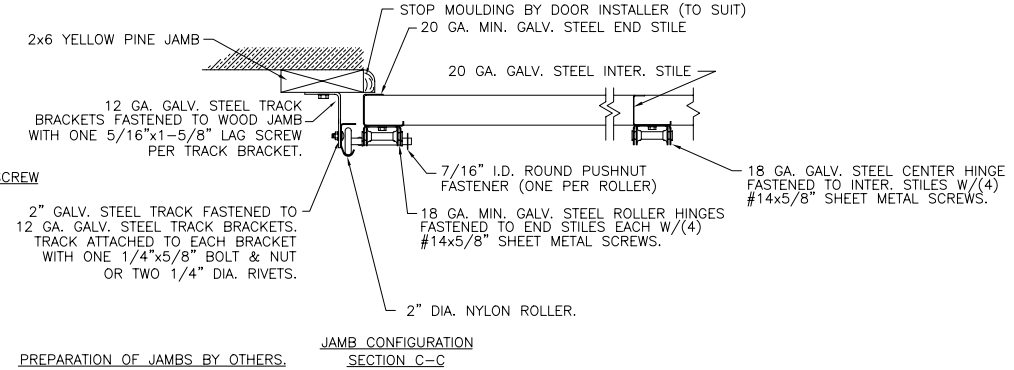
DOOR HEIGHT	# OF SECTIONS
8'-3" TO 8'-9"	5
9'-0" TO 10'-6"	6
10'-9" TO 12'-0"	7



THIS DOOR MEETS OR EXCEEDS THE DESIGN LOADS FOR THE WIND SPEEDS LISTED BELOW ACCORDING TO THE 2000 INTERNATIONAL BUILDING/RESID. CODE FOR THE FOLLOWING CONDITIONS: 1) ENCLOSED BUILDING, 2) DOOR HAS 2' OF WIDTH IN BUILDING'S END ZONE, 3) IMPORTANCE FACTOR OF 1.0, 4) ANY ROOF SLOPE, AND 5) 50% SAFETY FACTOR.

WIND SPEED (MPH)	≤ 90
EXPOSURE LEVEL	B
MEAN ROOF HEIGHT	30'

VERTICAL JAMB ATTACHMENT (WOOD FRAME BUILDINGS):
 OPTION 1: 3/8" x 3" (1-1/2" EMBED) LAG SCREWS ON 24" CENTERS. 1-1/8" O.D. MIN. WASHER REQUIRED. LAG SCREWS MAY BE COUNTERSUNK (NOT REQUIRED) TO PROVIDE FLUSH MOUNTING SURFACE.
 OPTION 2: 16D x 3-1/2" (2" EMBED) COMMON WIRE NAILS ON 8" CENTERS. (HORIZONTAL JAMBS DO NOT TRANSFER LOAD.)



PREPARATION OF JAMBS BY OTHERS.

NOTE: THE DESIGN OF THE SUPPORTING STRUCTURAL ELEMENTS SHALL BE THE RESPONSIBILITY OF THE PROFESSIONAL OF RECORD FOR THE BUILDING OR STRUCTURE AND IN ACCORDANCE WITH CURRENT BUILDING CODES FOR THE LOADS LISTED ON THIS DRAWING.

DESIGN ENGINEER: MARK WESTERFIELD, P.E.
 FLORIDA P.E. #48495
 DESIGN LOADS: +12.5 PSF & -14.0 PSF
 TEST LOADS: +19.0 PSF & -21.0 PSF

NOTICE: Confidential/Proprietary information of CLOPAY BUILDING PRODUCTS CO. is contained herein and may not be disclosed, used, duplicated, made available, or distributed without its prior consent. Failure to observe this notice may result in liability for any damages and losses resulting therefrom.

Third Angle Projection

TOLERANCES	
Unless Stated Otherwise	are
.0	± .031
.00	± .015
.000	± .005
.0000	± .001
Degrees	± 1/2°

Unless Stated Otherwise DIMENSIONS ARE IN INCHES.

8585 Duke Boulevard
 Mason, OH 45040 USA
 Tel. No. 513-770-4800
 Fax No. 513-770-4853

Glopay
 Building Products Company

DESCRIPTION: H73, H76, H94; 16'W; +12.5/-14.0 PSF DES.

DRAWN BY: DAS	DATE: 11/27/02	SCALE: NTS	DWG. B
CHECKED BY: -	DATE: -	SHEET 1 OF 1	SIZE
DWG. NO.: 102741	REV. NO. 00		

4

3

2

1