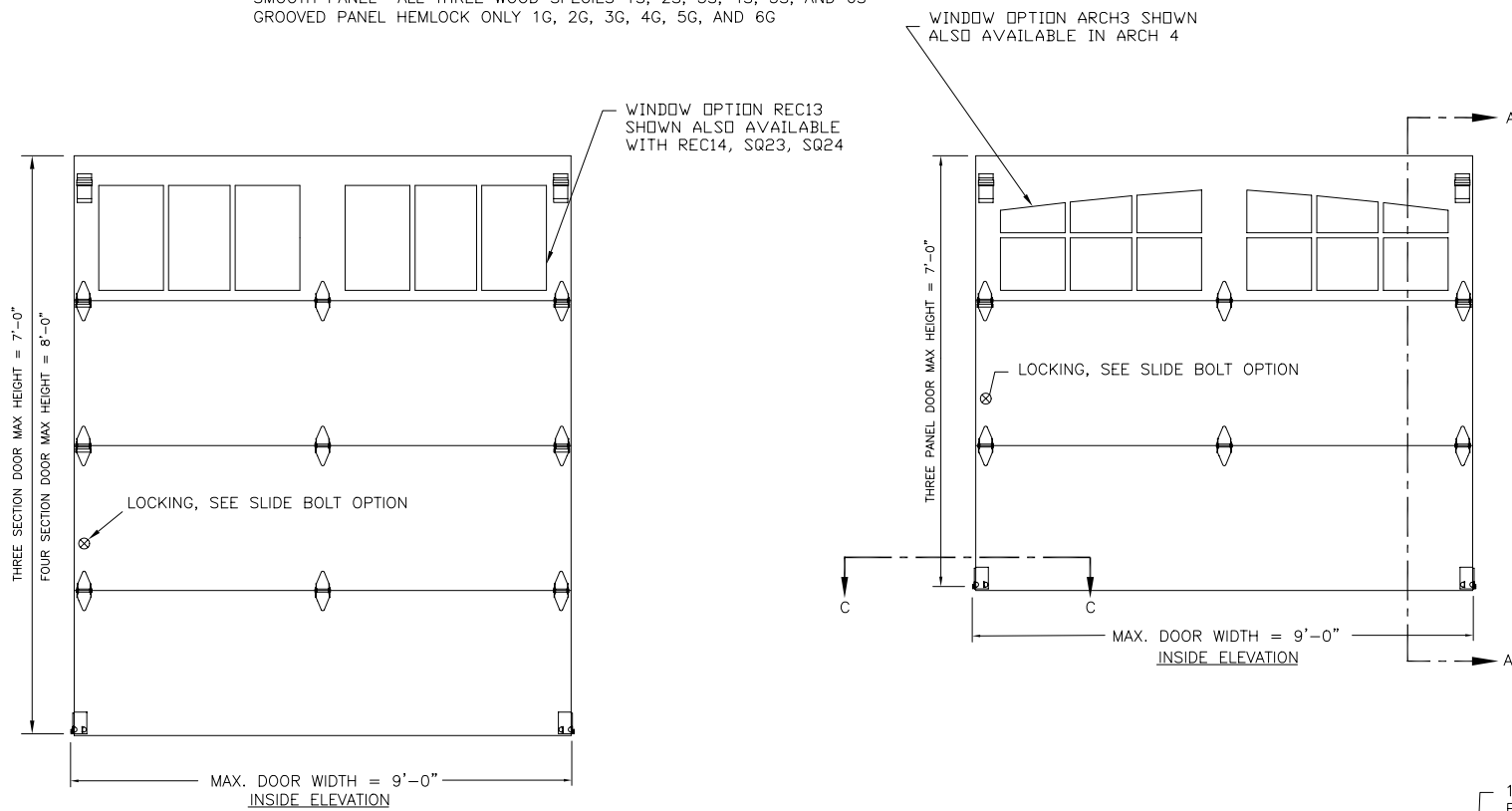


CLOPAY MODELS RRXX\*, CRXX\* (REDWOOD), RHXX\*, CHXX\* (HEMLOCK), AND RCXX\*, CCXX\* (CEDAR)

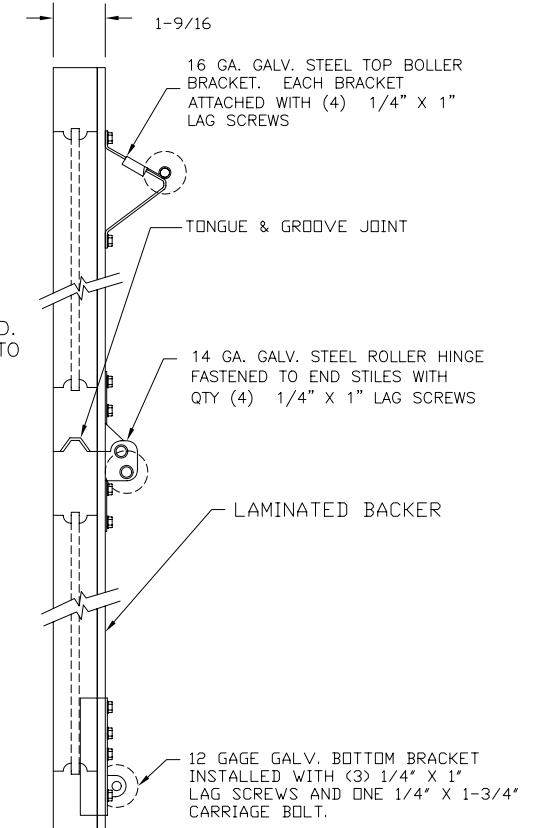
\*XX LAST TWO DIGITS OF MODEL NUMBER  
SMOOTH PANEL ALL THREE WOOD SPECIES 1S, 2S, 3S, 4S, 5S, AND 6S  
GROOVED PANEL HEMLOCK ONLY 1G, 2G, 3G, 4G, 5G, AND 6G

REVISIONS					
REV. NO.	ZONE:	DATE:	ECN NO.	APPVD:	DESCRIPTION
00	-	04/28/03	ER1037	SH	ORIGINAL ISSUE



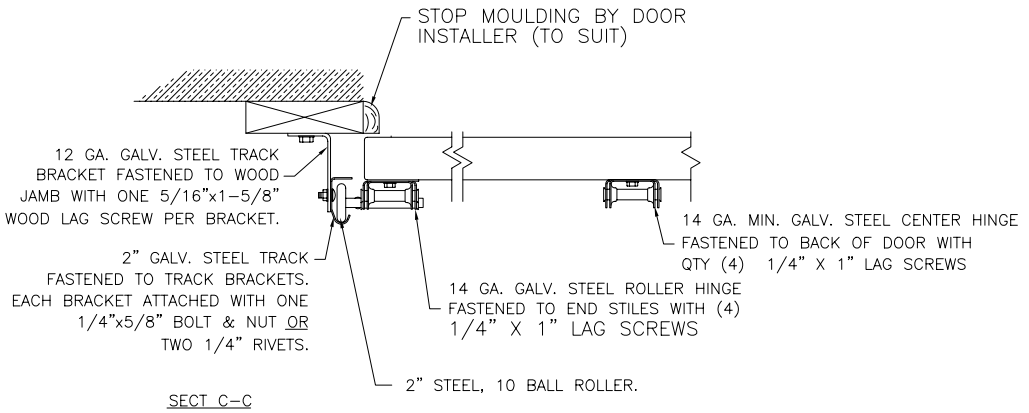
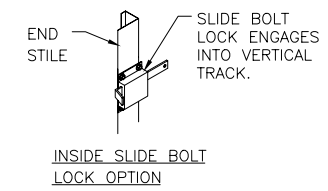
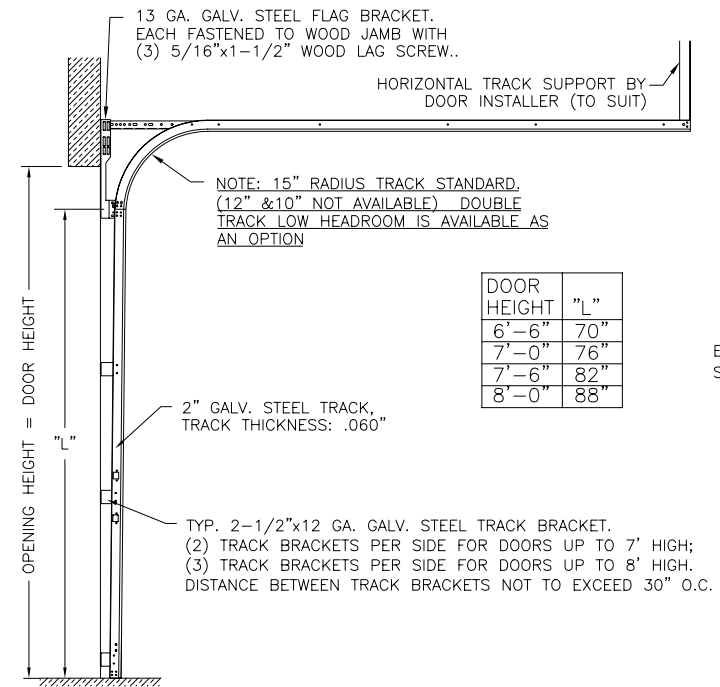
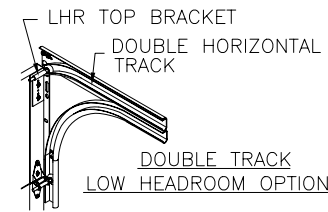
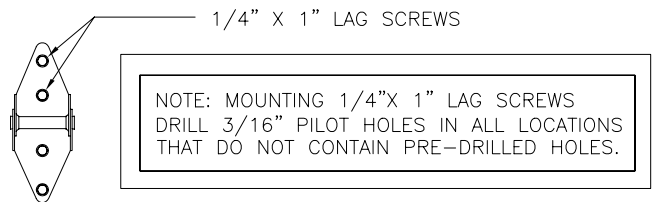
VERTICAL JAMB ATTACHMENT (WOOD FRAME BUILDINGS):  
OPTION 1: 3/8" x 3" (1-1/2" EMBED) LAG SCREWS ON 24" CENTERS. 1-1/8" O.D. MIN. WASHER REQUIRED. LAG SCREWS MAY BE COUNTERSUNK (NOT REQUIRED) TO PROVIDE FLUSH MOUNTING SURFACE.  
OPTION 2: 16D x 3-1/2" (2" EMBED) COMMON WIRE NAILS ON 9" CENTERS. (HORIZONTAL JAMBS DO NOT TRANSFER LOAD.)

SECT A-A



THIS DOOR MEETS OR EXCEEDS THE DESIGN LOADS FOR THE WIND SPEEDS LISTED BELOW ACCORDING TO THE 2000 INTERNATIONAL BUILDING/RESID. CODE FOR THE FOLLOWING CONDITIONS: 1) ENCLOSED BUILDING, 2) DOOR HAS 2' OF WIDTH IN BUILDING'S END ZONE, 3) IMPORTANCE FACTOR OF 1.0, 4) ANY ROOF SLOPE, AND 5) 50% SAFETY FACTOR.

WIND SPEED (MPH)	≤ 90	100
EXPOSURE LEVEL	B	B
MEAN ROOF HEIGHT	30'	30'



DESIGN ENGINEER: MARK WESTERFIELD, P.E.  
FLORIDA P.E. #48495, NC P.E. #23832, TEXAS P.E. #91513

DESIGN LOADS: +20.0 P.S.F. & -21.0 P.S.F.  
TEST LOADS: +30.0 P.S.F. & -31.5 P.S.F.

PART NO.: N/A

NOTE: THE DESIGN OF THE SUPPORTING STRUCTURAL ELEMENTS SHALL BE THE RESPONSIBILITY OF THE PROFESSIONAL OF RECORD FOR THE BUILDING OR STRUCTURE AND IN ACCORDANCE WITH CURRENT BUILDING CODES FOR THE LOADS LISTED ON THIS DRAWING.

NOTICE: Confidential/Proprietary information of CLOPAY BUILDING PRODUCTS CO. is contained herein and may not be disclosed, used, duplicated, made available, or distributed without its prior consent. Failure to observe this notice may result in liability for any damages and losses resulting therefrom.	Unless Stated Otherwise TOLERANCES are .0 = ±.031 .00 = ±.015 .000 = ±.005 .0000 = ±.001 Degrees = ±1/2°	8585 Duke Boulevard Mason, OH 45040 USA Tel. No. 513-770-4800 Fax No. 513-770-4853
	Third Angle Projection	

DESCRIPTION: MODEL RRxx RHxx RCxx: 9'W, +13/-15 DES. LOAD			
DRAWN BY: SH	DATE: 04/28/03	SCALE: N/A	DWG. SIZE B
CHECKED BY: SH	DATE: 04/28/03	SHEET 1 OF 1	REV. NO. 00
DWG. NO.: 102901		REV. NO. 00	