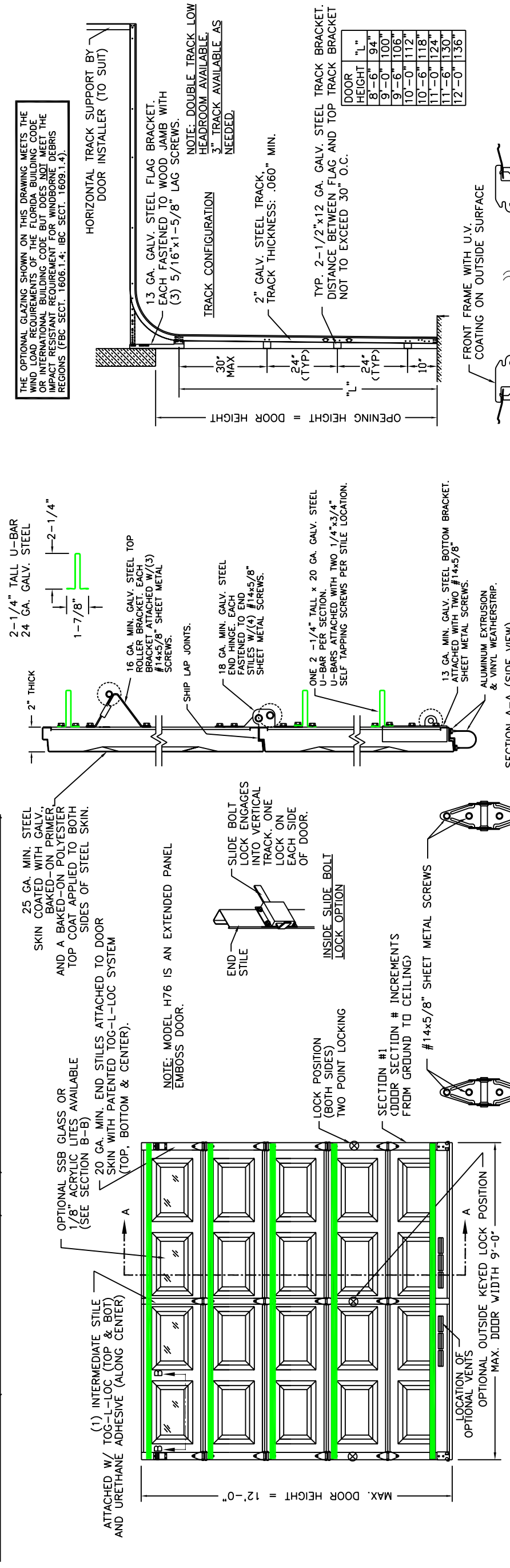


CLOPAY MODEL H73, IDEAL MODEL H6ST (25 GA. STEEL SKIN)
 CLOPAY MODEL H94, IDEAL MODEL H4ST (24 GA. STEEL SKIN)
 CLOPAY MODEL H500, IDEAL MODEL H6SF (25 GA. STEEL SKIN W/1-5/16" THICK POLYSTYRENE FOAM INSULATION)
 IDEAL MODEL H4SF (24 GA. STEEL SKIN W/1-5/16" THICK POLYSTYRENE FOAM INSULATION)

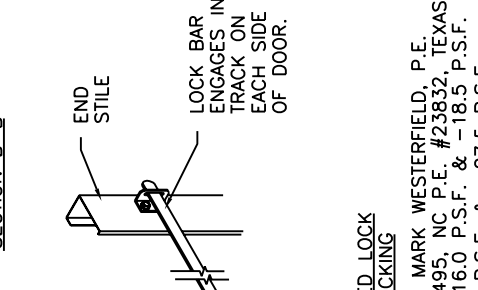
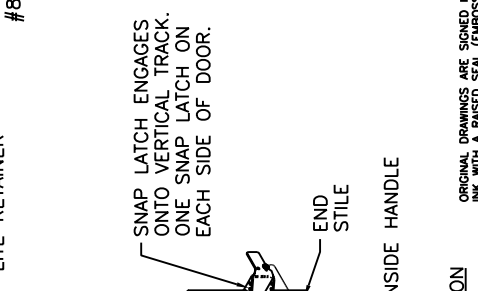
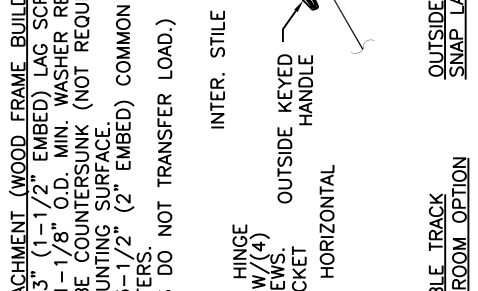
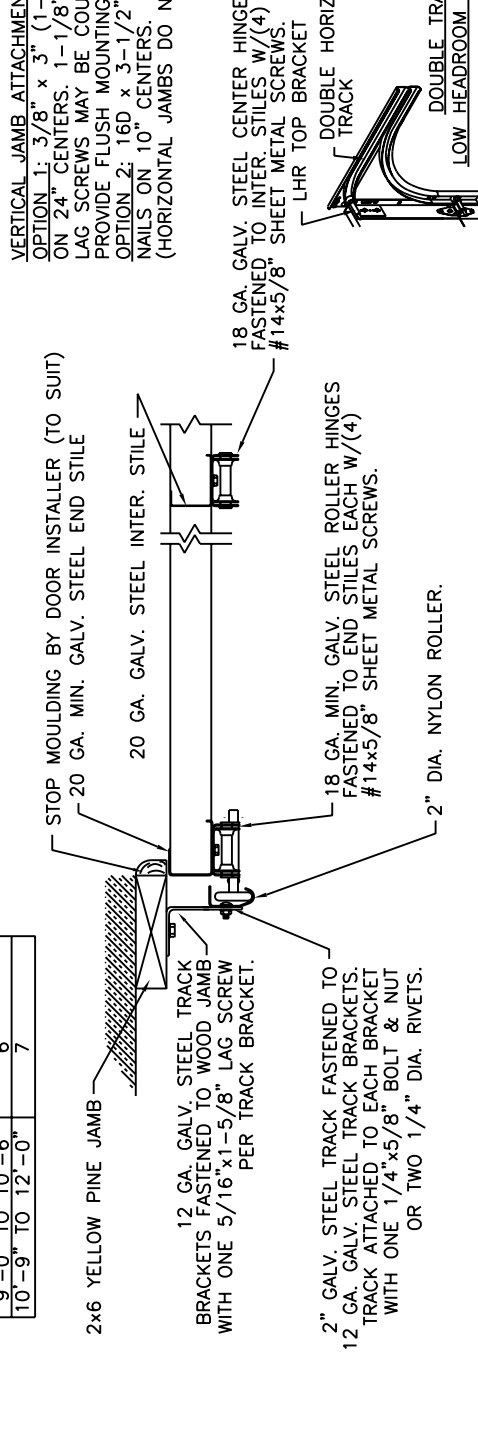
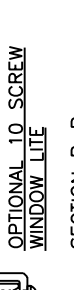
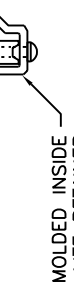
REVISIONS

REV. NO.	ZONE:	DATE:	ECN NO.	APPVD:	DESCRIPTION
00	-	08/18/03	ER1031	SH	ORIGINAL ISSUE



DOOR HEIGHT	# OF SECTIONS
8'-3" TO 8'-9"	5
9'-0" TO 10'-6"	6
10'-9" TO 12'-0"	7

DOOR HEIGHT	"L"
8'-6"	94"
9'-0"	100"
9'-6"	106"
10'-0"	112"
10'-6"	118"
11'-0"	124"
11'-6"	130"
12'-0"	136"



NOTE: THE DESIGN OF THE SUPPORTING STRUCTURAL ELEMENTS SHALL BE THE RESPONSIBILITY OF THE PROFESSIONAL OF RECORD FOR THE BUILDING OR STRUCTURE AND IN ACCORDANCE WITH CURRENT BUILDING CODES FOR THE LOADS LISTED ON THIS DRAWING.

PREPARATION OF JAMBS BY OTHERS.

JAMB CONFIGURATION SECTION C-C

THIS DOOR MEETS OR EXCEEDS THE DESIGN LOADS FOR THE WIND SPEEDS LISTED BELOW ACCORDING TO THE 2001 FLORIDA BLDG. CODE OR 2000 IBC (ASCE7-98) FOR THE FOLLOWING CONDITIONS: 1) ENCLOSED BUILDING, 2) DOOR HAS 2' OF WIDTH IN BUILDING'S END ZONE, 3) IMPORTANCE FACTOR OF 1.0, 4) ANY ROOF SLOPE, AND 5) 50% SAFETY FACTOR.

WIND SPEED (MPH)	90	90	100
EXPOSURE LEVEL	B	C	B
MEAN ROOF HEIGHT	30'	15'	30'

NOTE: CONFIDENTIAL/PROPRIETARY INFORMATION IS CONTAINED HEREIN AND MAY NOT BE DISCLOSED, USED, REPRODUCED, COPIED, OR TRANSMITTED IN ANY FORM OR BY ANY MEANS WITHOUT ITS PRIOR CONSENT. FAILURE TO OBSERVE THIS NOTICE MAY RESULT IN LIABILITY FOR ANY DAMAGES AND LOSSES RESULTING THEREFROM.

Third Angle Projection

Unless Stated Otherwise DIMENSIONS ARE IN INCHES.

Unless Stated Otherwise TOLERANCES ARE

.0 = ±.031
 .00 = ±.015
 .000 = ±.005
 .0000 = ±.001
 Degrees = ± 1/2'

ORIGINAL DRAWINGS ARE SIGNED IN BLUE INK WITH A RAISED SEAL (EMBOSSED).

DESIGN ENGINEER: MARK WESTERFIELD, P.E.
 FLORIDA P.E. #48495, NC P.E. #23832, TEXAS P.E. #91513
 DESIGN LOADS: +16.0 P.S.F. & -18.5 P.S.F.
 TEST LOADS: +24 P.S.F. & -27.5 P.S.F.

8585 Duke Boulevard
 Mason, OH 45040 USA
 Tel. No. 513-770-4800
 Fax No. 513-770-4853

DESCRIPTION: CLOPAY & IDEAL EXT'D HGT SC +16.0/-18.5 PSF DES
 DRAWN BY: F. LEWIS
 CHECKED BY: SH
 DATE: 7/30/03
 SCALE: SHEET 1 OF 1
 DWG. NO.: 102952
 REV. NO.: 00