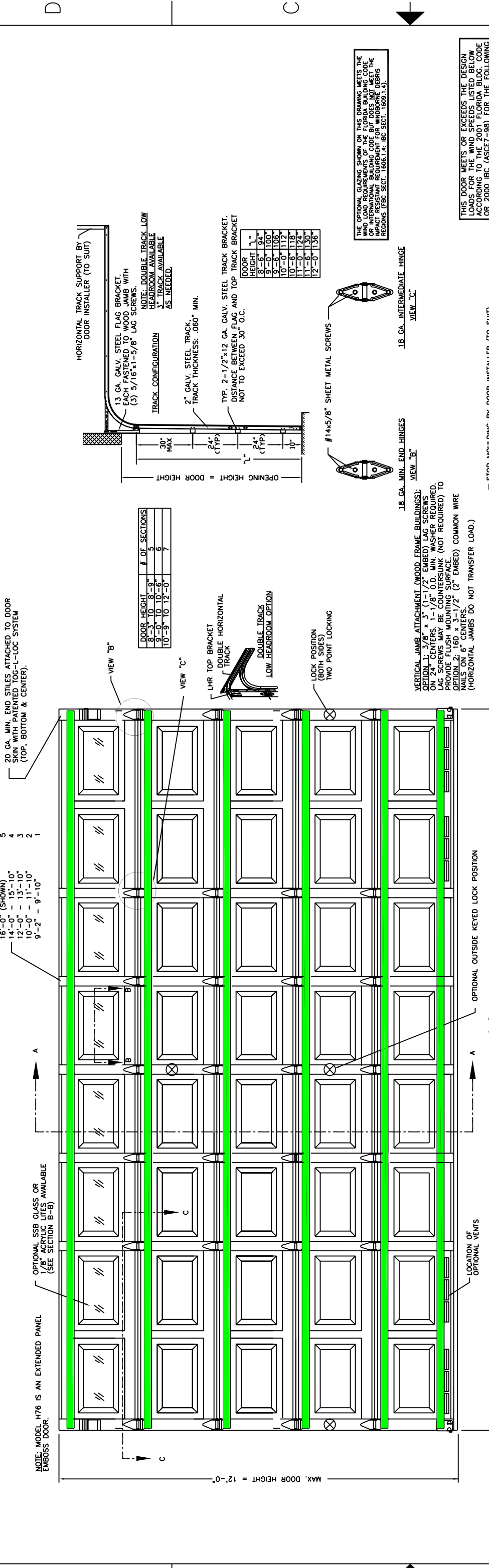


CLOPAY MODEL H73, IDEAL MODEL H6ST (25 GA. STEEL SKIN)
 CLOPAY MODEL H94, IDEAL MODEL H4ST (24 GA. STEEL SKIN)
 CLOPAY MODEL H500, IDEAL MODEL H6SF (25 GA. STEEL SKIN WITH 1-5/16" THICK POLYSTYRENE FOAM INSULATION)
 IDEAL MODEL H4SF (24 GA. STEEL SKIN WITH 1-5/16" THICK POLYSTYRENE FOAM INSULATION)

| REV. NO. | ZONE | DATE | ECN NO. | APPVD: | DESCRIPTION |
|----------|------|---------|---------|--------|----------------|
| 00 | - | 8/18/03 | ER1031 | SH | ORIGINAL ISSUE |

| REV. NO. | ZONE | DATE | ECN NO. | APPVD: | DESCRIPTION |
|----------|------|---------|---------|--------|----------------|
| 00 | - | 8/18/03 | ER1031 | SH | ORIGINAL ISSUE |

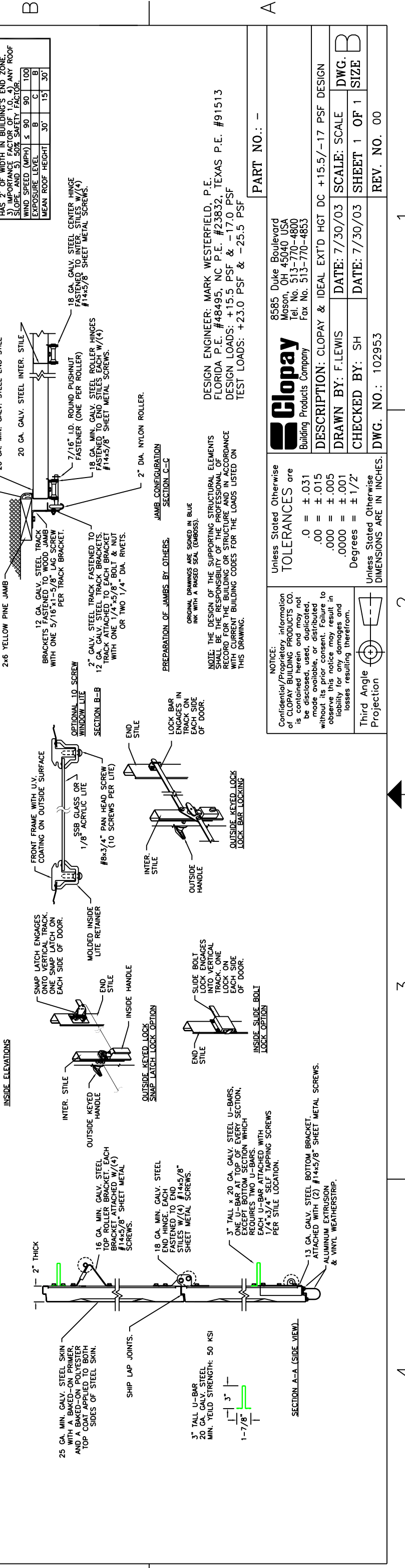
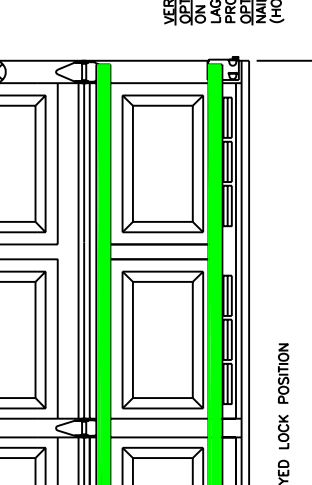
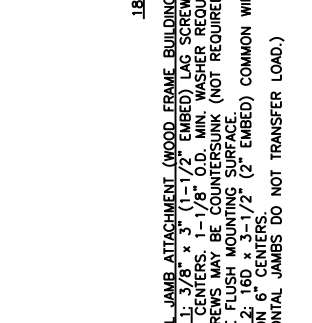
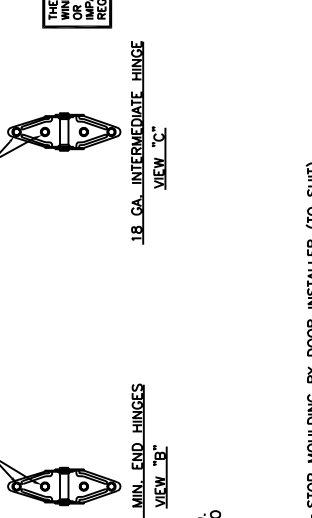
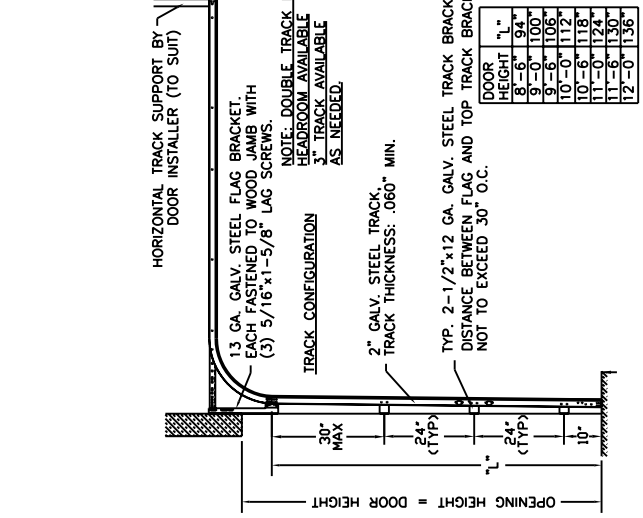


INTERMEDIATE STILE SPECIFICATION:
 # OF INTER. STILE

| | |
|------------------|---|
| 16'-0" (SHOWN) | 5 |
| 14'-0" - 15'-10" | 4 |
| 12'-0" - 13'-10" | 3 |
| 10'-0" - 11'-10" | 2 |
| 9'-2" - 9'-10" | 1 |

DOOR HEIGHT

| | |
|------------------|---|
| 8'-3" TO 8'-9" | 5 |
| 9'-0" TO 10'-6" | 6 |
| 10'-9" TO 12'-0" | 7 |



THIS DOOR MEETS OR EXCEEDS THE DESIGN LOADS FOR THE WIND SPEEDS LISTED BELOW ACCORDING TO THE 2001 FLORIDA BLDG. CODE OR 2000 IBC (ASCE7-98) FOR THE FOLLOWING CONDITIONS: 1) ENCLOSED BUILDING, 2) DOOR HAS 2' OF WIDTH IN BUILDING'S END ZONE, 3) IMPORTANCE FACTOR OF 1.0, 4) ANY ROOF SLOPE, AND 5) 50% SAFETY FACTOR.

| WIND SPEED (MPH) | A | B | C | B |
|------------------|-----|-----|-----|-----|
| EXPOSURE LEVEL | 5 | 90 | 90 | 100 |
| MEAN ROOF HEIGHT | 30' | 15' | 30' | |

THE OPTIONAL GLAZING SHOWN ON THIS DRAWING MEETS THE WIND LOAD REQUIREMENTS OF THE FLORIDA BUILDING CODE OR INTERNATIONAL BUILDING CODE BUT DOES NOT MEET THE IMPACT RESISTANCE REQUIREMENT FOR HURRICANE DEBRIS REGIONS (BC. SEC. 1, 1008.1.4, BC. SEC. 1, 1021.1.5).

NOTE: THE DESIGN OF THE SUPPORTING STRUCTURAL ELEMENTS SHALL BE THE RESPONSIBILITY OF THE PROFESSIONAL OF RECORD FOR THE BUILDING OR STRUCTURE AND IN ACCORDANCE WITH CURRENT BUILDING CODES FOR THE LOADS LISTED ON THIS DRAWING.

DESIGN ENGINEER: MARK WESTERFIELD, P.E.
 FLORIDA P.E. #48495, NC P.E. #23832, TEXAS P.E. #91513
 DESIGN LOADS: +15.5 PSF & -17.0 PSF
 TEST LOADS: +23.0 PSF & -25.5 PSF

NOTE: CONFIDENTIAL/PROPRIETARY INFORMATION OF CLOPAY BUILDING PRODUCTS CO. IS CONTAINED HEREIN AND MAY NOT BE DISCLOSED, USED, DUPLICATED, REPRODUCED, COPIED, OR DISTRIBUTED WITHOUT ITS PRIOR CONSENT. FAILURE TO OBSERVE THIS NOTICE MAY RESULT IN LIABILITY FOR ANY DAMAGES AND LOSSES RESULTING THEREFROM.

UNLESS STATED OTHERWISE DIMENSIONS ARE IN INCHES.

UNLESS STATED OTHERWISE TOLERANCES ARE

| | |
|-------|---------|
| .0 | = ±.031 |
| .00 | = ±.015 |
| .000 | = ±.005 |
| .0000 | = ±.001 |

Degrees = ± 1/2°

Third Angle Projection

Part No.: -

Glopay
 Building Products Company
 8585 Duke Boulevard
 Mason, OH 45040 USA
 Tel. No. 513-770-4800
 Fax No. 513-770-4853

DESCRIPTION: CLOPAY & IDEAL EXT'D HGT DC +15.5/-17 PSF DESIGN
 DRAWN BY: F.LEWIS
 CHECKED BY: SH
 DATE: 7/30/03
 DATE: 7/30/03
 SCALE: SCALE
 SHEET 1 OF 1
 DWG. B
 SIZE B

REV. NO.: 00